

## The Use of Routinely Collected PROMs Data in Community Rehabilitation in Alberta



**A Fireside  
Chat with  
Community  
Rehabilitation**  
May 28, 2020

**apersu**  APERSU Webinar Series  
Alberta PROMS and QOL  
Research and Support Unit



## Introductions.....

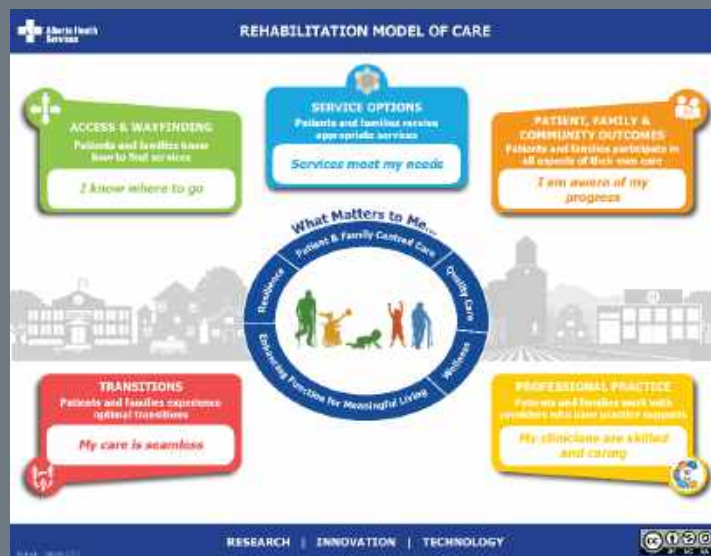


**Katie Churchill**  
*Senior Practice Lead*  
Allied Health Practice & Education  
Health Professions Strategy & Practice  
Alberta Health Services



**Eileen Keogh**  
*Senior Practice Consultant*  
Allied Health Practice & Education  
Health Professions Strategy & Practice  
Alberta Health Services

# How did this all get started?



# Implementation

18 Early Adopter Teams



Learning Collaborative

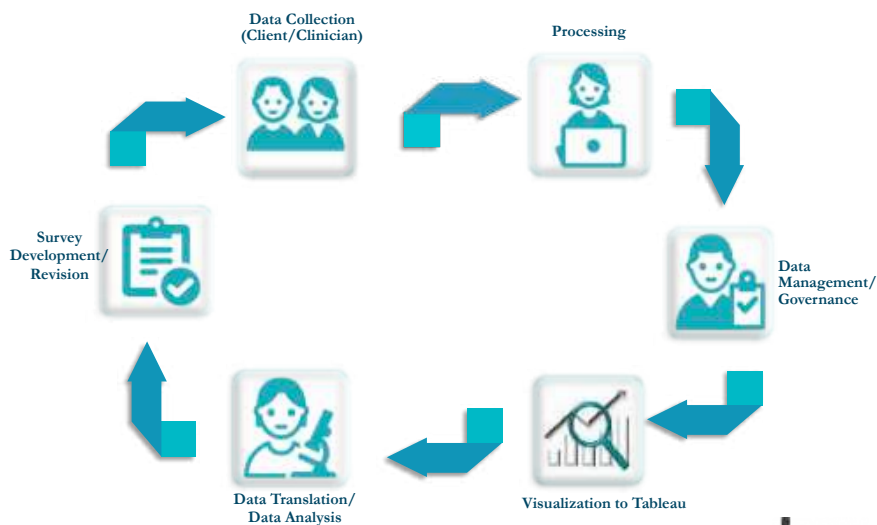


159 SPREAD Sites

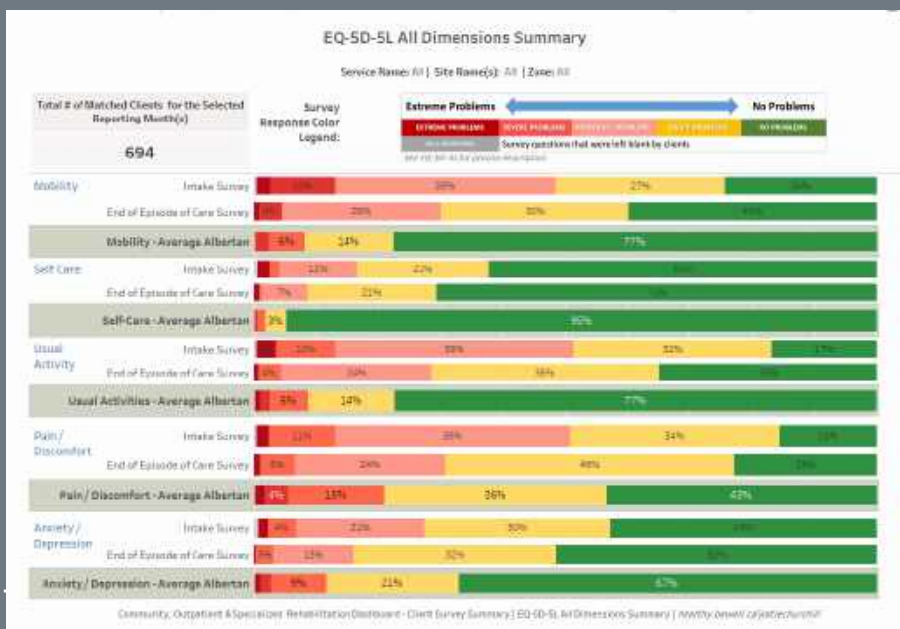


# Data Collection, Processing & Visualization

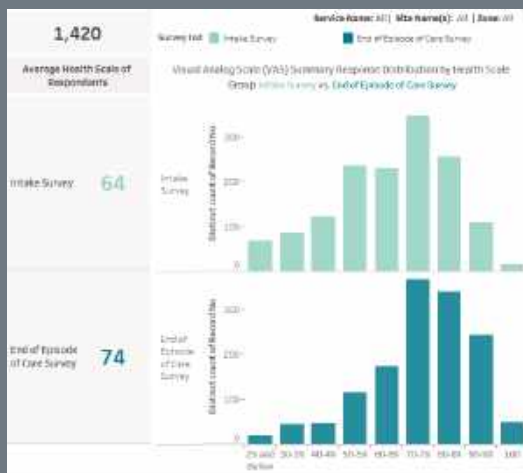
Community Rehabilitation Client Survey Data Flow



## Aggregate Data: Visualization



# Aggregate Data: Visualization

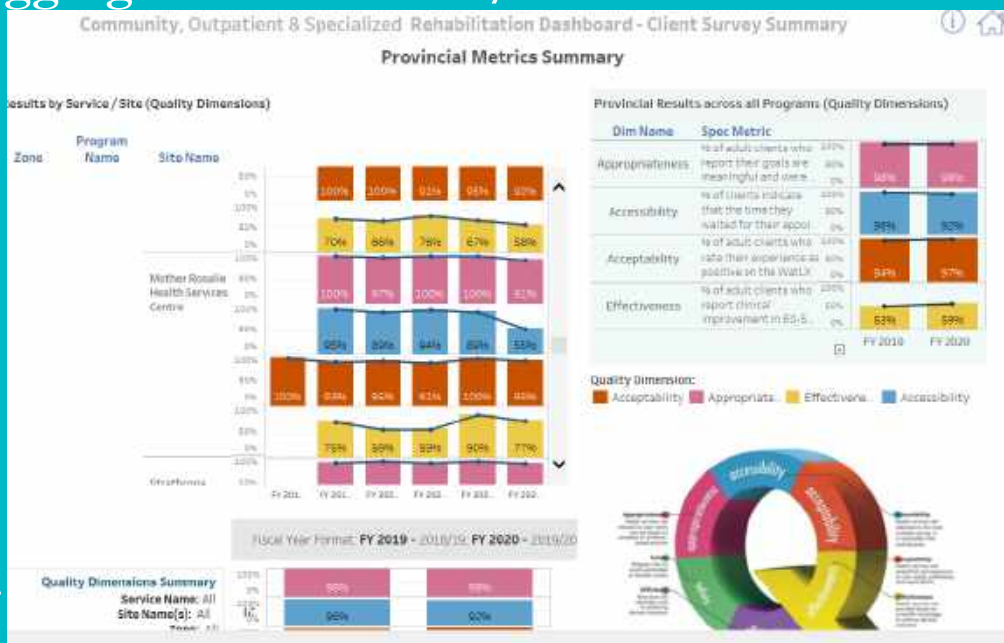


Visual Analogue Scale (VAS) Score

## Index Score

Average Index Score of Respondents by Survey Type		Average Index Score Change of Matched Clients	
Intake Survey	0.69	Significant Index Score Change: $\geq 0.04$	Provincial Avg. Index Score Change (from Dec-18 to date): 0.09
End of Episode of Care Survey	0.78		0.09

# Aggregate Data: Meso./Macro



## Value of PROMs

### System Growth & Development

#### Learning Community

- Increased clinician awareness
- Developing skills in quality improvement & analytics for local change

#### Transparency & Accountability

- Data visible & available across the province
- Shared with client and family advisors

#### Provincial Standardization

- Comparability across programs and sites
- Comparing Rehabilitation Clients to Alberta Norms



## Moving Forward ....

- Connect Care (for better, more timely micro level feedback for clinicians)
- Analysis of outcomes by service, standard, intensity, condition and ....
- Linkage between outcomes and experience.
- Integrating PROM data with health system data
- Partnership with APERSU.



## Questions



# Thank You



Contact:  
[apersu@ualberta.ca](mailto:apersu@ualberta.ca)

**Previous Webinars:** <https://apersu.ca/webinars/>

- Collecting, analyzing and interpreting EQ-5D Data
- The use of EQ-5D in Program Evaluation
- The use of EQ-5D in Economic Evaluations
- The use of EQ-5D in Clinical Practice
- Comparing PROMs/EQ-5D data with population norms
- The use of PROMs/EQ-5D in economic analysis
- Disease-specific PROMs: when and how to use them
- Minimally important difference of PROMs: What is it, and when and how to use it?
- How can we use routinely collected PROMs data to support decision-making within the healthcare system?